

SPEC COMMERCIALS

A person is walking away from the camera down a long, dark, arched tunnel. The tunnel is illuminated by several street lamps, including one hanging from the ceiling in the center. The person's shadow is cast on the ground in front of them. The overall atmosphere is dark and mysterious.

LOVE EVERY FLAW

Visual Dark Comedy No Dialogue.
2 actors. 1 location at night. .

LOCATION





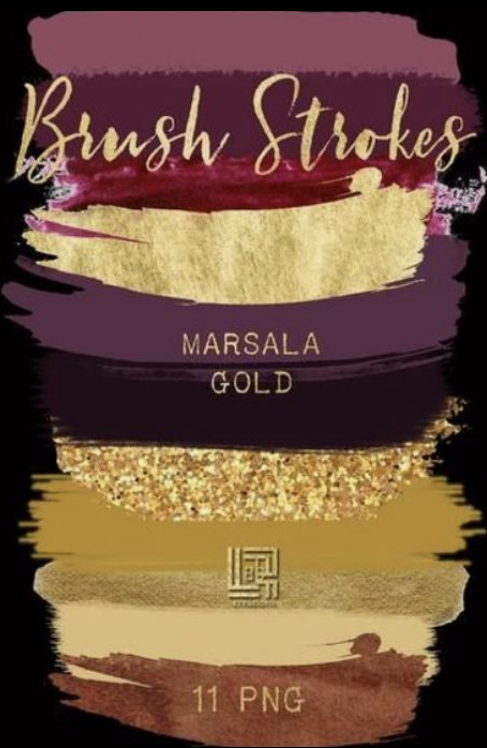
LIGHTING



- ❑ BLUE and RED LED-lighting coming from inside the club.
- ❑ Light flickering from inside the club following the rhythm of the music.
- ❑ Flares of light (dots: gold, green, red) coming from far away in the background
- ❑ Single source frontal lighting.
 - ❑ Light up skin
 - ❑ Wardrobe colors to pop against the dark.
 - ❑ To keep background pitch black.
- ❑ Neon sign color reflection on the floor.



COLOR PALETTE



PRIMARY
(granates y morados en vez de rojos)



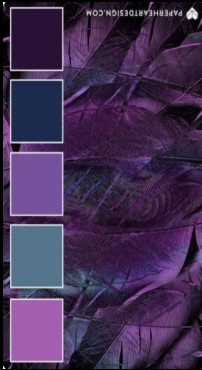
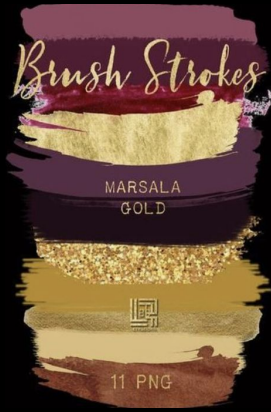
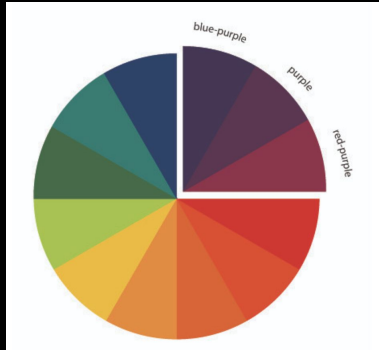
SECONDARY (turquoise and blues)



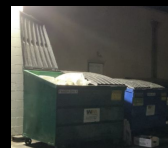
ANALOGOUS: Blue-purple, Purple, Red-purple

SECONDARY (turquoise and blues)

NOTE: avoid "red" on wardrobe. Let's use purples and wine colors



PRODUCTION DESIGN

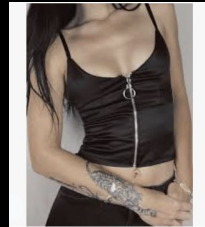




WARDROBE



- ❑ Two pieces outfit: Top and mini skirt.
- ❑ Top should be easy to open. Like the zipper below.
- ❑ Top should show cleavage but keep it classy.
- ❑ Colors to be pink and dark purple.
- ❑ High heels shoes or sandals.
- ❑ She could hold a clutch.
- ❑ Trending jewelry.





- ❑ Three pieces top outfit: Jacket, sweater and t-shirt or shirt.
- ❑ Dark Jeans to make it modern, or formal but ankle high pants.
- ❑ We could go darker purple than her, or light violet ones.
- ❑ Night club shoes or cool sneakers.
- ❑ Watch, and some jewelry.
- ❑ Button shirt
- ❑ Dark Purple blazer

NOTE: To have in mind that the wardrobe will be wet most of the time (him /her) so the color selected needs to look good and pop in its wet state.





One option would be to have a beige, earthy color underwear.



The other one is to have an aqua blue option. Would be nice to have in her little details of pink or purple.



Frontal light.
Dark Background.
Wardrobe to pop in the darkness

